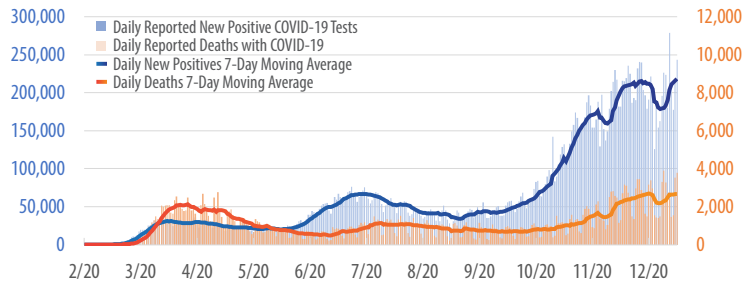


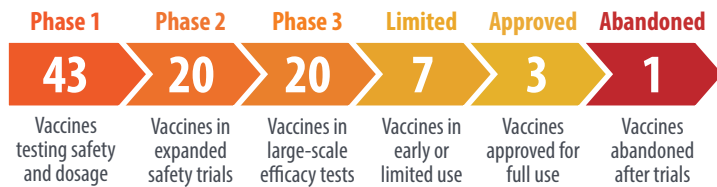
# First Trust COVID-19 TRACKER

## Daily Reported New Positive COVID-19 Tests vs. Daily Reported Deaths with COVID-19 in the U.S.

February 26, 2020 - January 6, 2021



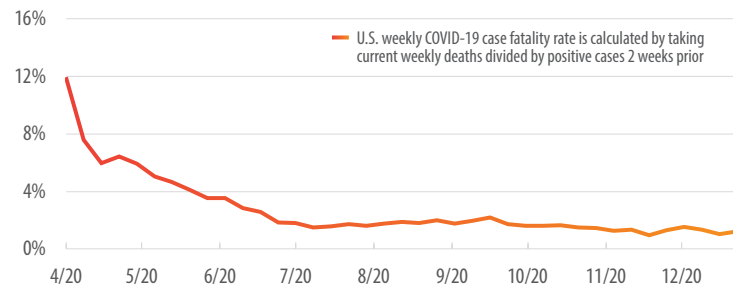
Source: Covidtracking.com



Source: The New York Times. Data as of January 6, 2021.

## U.S. Weekly COVID-19 Case Fatality Rate

April 12, 2020 - January 3, 2021

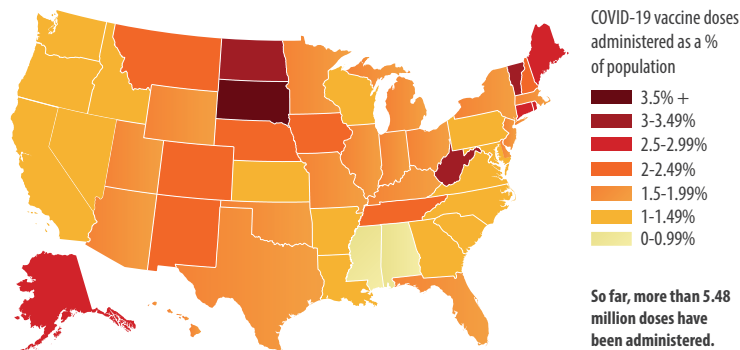


Source: Covidtracking.com

As of January 6, 2021 at 9 a.m. EST, **511,635 vaccinations (1st dose) in Long-Term Care facilities had been administered. That's only 15% of the 3,416,875 doses that have already been distributed to them.** Only 0.6% of the U.S. population live in nursing homes or residential care facilities, but residents in those facilities account for 38% of all COVID-19 deaths.<sup>2</sup>

## COVID-19 Vaccines Across America

As of January 6, 2021



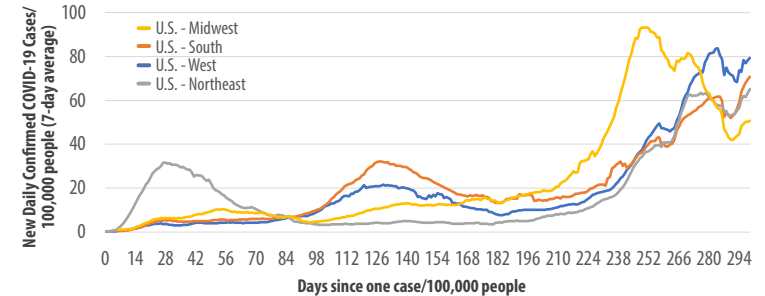
Sources: Bloomberg.com, census.gov (population estimates as of 7/1/20)

<sup>1</sup>burbio.com; <sup>2</sup>CDC.gov, freeopp.gov (May 7, 2020)

As of January 4, 2021, **53.4% of U.S. K-12 students are currently attending "virtual-only" schools, while 31.7% are attending "traditional in-person/every day" schools, and 14.9% are attending "hybrid" schools.**<sup>1</sup>

## Daily Reported COVID-19 Cases by U.S. Regions, Normalized by Population

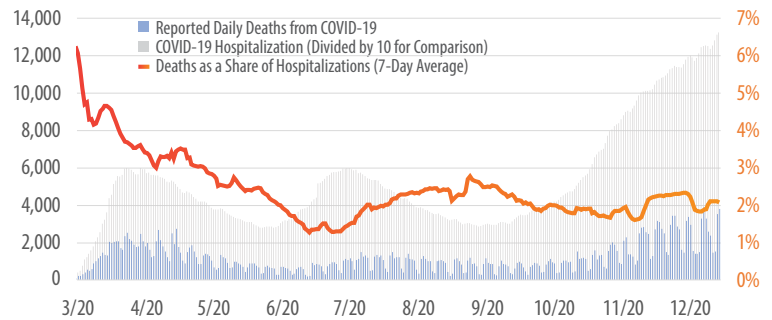
As of January 6, 2021



Sources: 91-DIVOC.com, Johns Hopkins University CSSE

## Deaths as a Share of Hospitalizations in the U.S.

March 24, 2020 - January 6, 2021



Source: Covidtracking.com

## Estimated COVID-19 Infections and Deaths by Age Group

February 2020 - November 2020

Age Group	Infections	Deaths	Infection Fatality Rate
0-4 years	3,020,624	45	0.001%
5-17 years	14,199,931	82	0.001%
18-49 years	48,905,808	11,975	0.024%
50-64 years	15,913,971	38,625	0.243%
65+ years	9,006,974	198,843	2.208%
All ages	91,185,370	249,570	0.274%

Sources: CDC.gov, First Trust Advisors